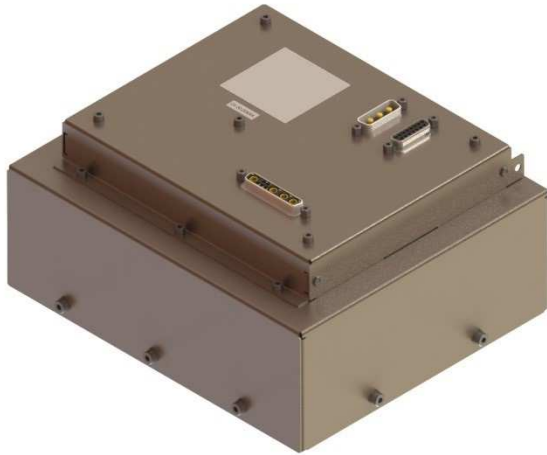


Advanced power management

Power supply and motor drive (PSMD) for compactor



The PSMD contains all the power generating system components to control hydraulic pump motor and fan for cabin trash compactor equipment.

It performs the following functions:

- > Compatible with wild frequency network
- > 1200W power supply for sensorless motor
- > Active power factor corrector rectifier- with the last norms (including harmonics), last A/C
- > Protection against over current, over voltage, under voltage and over temperature
- > Internal fault diagnostic (BITE)
- > CAN bus communication

Key features

- 3 phases 115 Volts alternative current (VAC) -variable frequency- power input
- Active power factor corrector rectifier
- Sensorless motor drive

Applications

- Airbus civil aircraft
- Boeing civil aircraft

Contact

TFE Electronics
Zone Actisud, Le Chapitre
18 rue Jean Perrin
31100 Toulouse
France

Tel: +33 (0) 534 666 565
tfe.sales@meggitt.com
www.tfelectroniques.com
www.meggitt.com



Advanced power management

Power supply and motor drive (PSMD) for compactor

Specifications

Electrical

Input voltage	3 phases 115 Volts alternating current (VAC) - variable frequency
Output	1200 W/3 phases - to PMSM Hydraulic pump motor
Active power factor corrector rectifier sensorless motor drive	25.5 (Volts direct current) VDC/40W - insulated auxiliary power supply

Physical

Width	225 mm
Height	194 mm
Depth	108 mm
Weight	2 600 g

Environmental

Temperature	-15°C to +65°C (normal operating conditions) -40°C to +80°C (extended during 1 hour operating conditions)
DO254 level D	
RTCA/D0160F	
ABD100.1.8	
787B3-0147 RevC	

Note: Due to continuous process improvement, specifications are subject to change without notice

Functional diagram

